

local  
properties

buy • sell • let



## 180 Staincliffe Road Dewsbury, WF13 4RD

£695 PCM

\*\*\*\*\* WELL PRESENTED ONE BEDROOM END TERRACE - NEW KITCHEN FITTED 2026 - REDECORATED & NEW FLOOR COVERINGS LAID - AVAILABLE NOW \*\*\*\*\* This property has gas central heating and PVCu double glazing and comprises: entrance vestibule, open plan lounge with kitchen area, cellar, landing, double bedroom, bathroom. To the outside there is on street parking. Located close to Dewsbury & District Hospital, the property is ideally placed for access to all amenities and public transport services. Deposit - £800



• END TERRACE HOUSE • ONE DOUBLE BEDROOM • NEW KITCHEN FITTED  
2026 • REDECORATED & NEW FLOOR COVERINGS LAID

#### ENTRANCE VESTIBULE

Stairs to first floor. Door to front. Radiator.

#### LOUNGE & KITCHEN AREA

With recently fitted base and wall units incorporating stainless steel sink unit. Electric hob, electric oven and extractor hood. Plumbing for automatic washing machine. Tiled splashbacks. Access to cellar. Window to front. Radiator.

#### CELLAR

Providing extra storage space.

#### LANDING

Giving access to bedroom and bathroom.

#### BEDROOM

Window to front. Radiator.

#### BATHROOM

Part tiled with three piece suite comprising: bath with shower attachment and screen, pedestal wash hand basin, low flush wc. Extractor fan. Window to front. Radiator.

#### EXTERIOR

On street parking to the front.

#### DIRECTIONS

From Dewsbury centre proceed up Halifax Road for some distance. At the traffic lights by The Butcher's Arms Public House turn left into Staincliffe Road. Number 180 will be found on the left hand side, signified by our To Let board.

#### NOTE

PETS - no

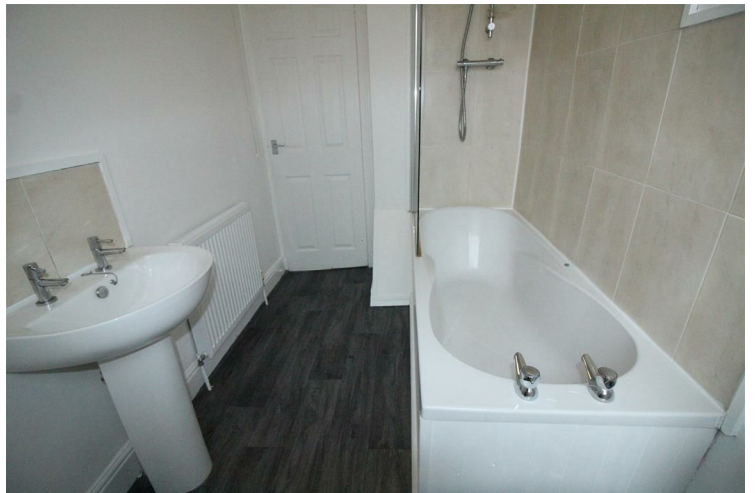
CHILDREN - no

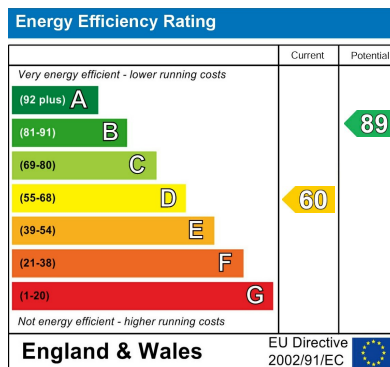
SMOKERS - outside only

The property is available now



- OPEN PLAN LOUNGE & KITCHEN • BATHROOM WITH SHOWER • EPC - D • DEPOSIT - £800 • AVAILABLE NOW





Agents Note: Whilst every care has been taken to prepare these particulars, they are for guidance purposes only. All measurements are approximate and are for general guidance purposes only and whilst every care has been taken to ensure their accuracy, they should not be relied upon and potential buyers/tenants are advised to recheck the measurements

Birstall Sales  
Midland Bank Chambers  
Smithies Lane  
Birstall  
Batley  
West Yorkshire  
WF17 9EB

01924 474456  
info@localproperties.net  
<http://www.localproperties.net/>

